

2023 Woolworths Junior Landcare Grants Program



Grant Application Guidelines

Woolworths, in partnership with Landcare Australia's Junior Landcare program, invites primary schools and early learning centres to apply for funding for environmental projects through the *Woolworths Junior Landcare Grants* program.

This national program seeks to inspire the next generation of environmental champions by funding biodiversity, food production, First Nations perspectives and waste management focussed activities.

The Junior Landcare Learning Centre provides a library of activities that primary schools and early learning centres can use to develop and implement an environmental project, such as creating a food or Indigenous plant use garden, creating a frog-friendly habitat, learning about waste management and many more!

Project funding available

Woolworths Junior Landcare Grants of **up to \$1,000.00 (ex GST)** each, will be offered in the 2023 Grant round, with up to 1,000 grants available.

Key dates

Applications open	Wednesday 8 th February 2023 (10am AEDT)
Applications close	Friday 17 th March 2023 (5pm AEDT)
Projects announced	Term 2, 2023
Final report due & projects complete	Thursday 8 th November 2023



Enquiries

If you have any questions after reading these guidelines and the Frequently Asked Questions (FAQs), please call 1800 151 105 or email: grants@landcareaustralia.com.au.

Who can apply?

Australian primary schools and early learning centres (preschools, childcare centres and kindergartens) are eligible to apply for the *Woolworths Junior Landcare Grant*.

The project must be related to one or more of the following:

- Food Production;
- Biodiversity;
- First Nations perspectives; and/or
- Waste Management practices



The project application must also include:

- One photo of students that exemplifies your project, for use on a published map of projects on the Landcare Australia website.

Australian primary schools and early learning centres that received a *Woolworths Junior Landcare Grant* previously, are eligible to apply for this grant round if that grant has been acquitted. Please refer to our [FAQs](#) for further eligibility details.

About the Woolworths Junior Landcare Grants program

The *Woolworths Junior Landcare Grants* program offers funding for Australian primary schools and early learning centres seeking to inspire the next generation of environmental champions.

The program offers opportunities for schools to engage in outdoor, hands-on environmental learning activities that promote the development of positive environmental, educational and social outcomes.

Projects must focus on one or more of the following areas:

- **Food Production**, e.g. learning about plant and pollinator lifecycles, where our food comes from and developing vegetable, herb and bush tucker gardens; and / or
- **Biodiversity**, e.g. learning about local ecosystems, including plants, animals and soil, and creating habitat required for local plants and animals by planting local plants, installing nest boxes, creating a frog bog or managing weeds; and / or



- **First Nations perspectives**, e.g. creating an Indigenous plant-use garden or a yarning circle; and / or
- **Waste Management**, e.g. learning how to set up and manage composts and worm farms, or implementing the 4 R's (Refusing, Reducing, Reusing, Recycling).

What we DO fund:

- ✔ Vegetable, herb and bush tucker gardens
- ✔ Junior Landcare Learning Centre activities
- ✔ Planting species native to your local area
- ✔ Removal of invasive weeds
- ✔ Seed collection and propagation
- ✔ Nest box construction and installation
- ✔ Composting and worm farms
- ✔ Bees and bee hives
- ✔ Recycling project specific infrastructure e.g. bins and caddies totalling a maximum of \$750
- ✔ Project infrastructure, tools and equipment together totalling a maximum of \$500. (e.g. installation of interpretative signage, wheelbarrows, tools, gloves, watering cans, irrigation equipment, water tanks, chicken coops, garden sheds, green houses, fencing, seating, paving, food preparation equipment, hiring of bobcats and other equipment etc.)
- ✔ Purchase of materials to support education and awareness raising activities limited to a maximum total of \$500 (e.g. design and production of posters, educational books, information booklets, technology such as cameras and tablets.)

What we DO NOT fund:

- ✘ Consultancy and contractor fees (e.g. cost of landscape architects)
- ✘ Catering / food
- ✘ Wages, administration and labour costs (e.g. teacher relief costs)
- ✘ Professional Development and training courses for teachers
- ✘ Travel costs and airfares
- ✘ Delivery and postage costs
- ✘ Synthetic grass and flowers
- ✘ Power tools (e.g. lawnmowers, brush-cutters & chainsaws)
- ✘ Livestock (incl. chickens)
- ✘ Artwork / artist costs
- ✘ Excursions or incursions

Note: these costs can be included as 'in-kind' in the budget table



Junior
Landcare



Woolworths
The fresh food people

There are lots of different forms that the ideal project can take, and we encourage children to be actively involved in the research and design process. The [Top 10 Woolworths Junior Landcare Grant Project Ideas](#) resource is a great place to start. You can also find inspiration via the Junior Landcare [case studies](#). Have a look at previous Woolworths Junior Landcare projects on the [projects map](#) for further ideas and inspiration.

Funding considerations

Each application's budget is reviewed against the below funding list to ensure only eligible items are funded. Please make sure your budget meets the below:



Planning your project

To help you to develop strong project ideas:

- We have created a list of [Top 10 Woolworths Junior Landcare Grant Project Ideas](#) that you can use as inspiration when applying for your grant. Each project idea links to learning activities on the Junior Landcare Learning Centre where you can find checklists, activity sheets and other resources to help you implement these ideas in your school or early learning centre.
- Download and read the [Junior Landcare Project Planning Considerations](#).
- Plan all your project activities to be undertaken from late Term 2 (2023) until November 2023, and note it in your application.
- Plan ahead to allocate people for key activities and responsibilities during holiday breaks (e.g. watering plants, weeding and maintenance work). For advice on planning activities during summer break read: [Caring for your garden space over the summer](#)
- For more ideas on creating meaningful outdoor learning projects watch: [Creating meaningful outdoor educational experiences webinar](#)
- Set up a Green Team of senior students, teachers, parents, community members and others with expertise who can assist with planning and coordinating your project.
- Contact your local Landcare, Friends of, or Coastcare group and/or local Landcare Facilitator or Coastcare Coordinator, to discuss your ideas and ask if they can help with the project. Search the [National Landcare Directory](#) for a group in your local area.¹
- Find additional potential partners to include and support your project, such as your local council, First Nations groups, community organisations or local native plant nurseries. You can reach out to our listing of [Junior Landcare community organisations](#) to help your project development.
- Visit and join the [Junior Landcarer online community](#) to find professional learning networks and educational resources.



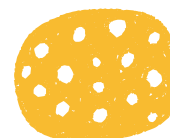
¹Please contact Landcare Australia if you are having difficulty connecting with local groups in your area.



Junior
Landcare



Woolworths
The fresh food people



Assessment criteria

Successful projects will be chosen based on the following criteria:

Criteria	How do I meet the criteria?
1. Expected environmental outcomes	<ul style="list-style-type: none"> Detail existing natural values (e.g. what animals use the area, what native plants already occur); and / or How your project improves natural values (e.g. providing habitat to native birds, improve the survival of indigenous species); and / or How your project will encourage sustainable practices (e.g. composting will reduce food waste going to landfill).
2. Expected educational outcomes and integration into the school curriculum	<ul style="list-style-type: none"> Detail the topics the students will learn about; and How the project activities will enhance student learning (e.g. being involved in planting activities will teach students about the growth and survival of living things (Biological Sciences)).
3. Level of hands-on student involvement in project	<ul style="list-style-type: none"> The focus of the project should be engaging children / students in the activities. Where appropriate, consider involving students in all aspects of the project (e.g. project planning and design to implementation and maintenance).
4. Level of involvement of the broader school community or local community	<ul style="list-style-type: none"> Consider and provide details about how the project will involve the wider community (e.g. signage, community working bees, community groups, donations).
5. Project activities that are feasible and technically sound	<ul style="list-style-type: none"> Detail support from local experts or groups (e.g. Landcare Groups); and / or The relevant experience of the project team; and / or The timing of activities and seasons. See Landcare Australia's Project Planning Considerations for some tips.
6. Realistic and detailed project budget	<ul style="list-style-type: none"> Include a budget which is itemised, and aligns with the project activities, scale and scope. Click here for budget examples.



Junior
Landcare



Woolworths
The fresh food people

Other criteria:

- To be eligible, your application **must include a school photo/logo for use on the Landcare Australia website**;
- Incomplete and late applications will not be considered;
- Groups with project reports still outstanding from previous Junior Landcare grants are ineligible for further funding until all reporting requirements are met.

How to apply

Primary schools and early learning centres can apply for a *Woolworths Junior Landcare Grant* on the [Landcare Australia Grant Site](#), powered by SmartyGrants until **5pm (AEDT) Friday 17th March 2023**.

To complete your application, you will need to:

1. Obtain endorsement from your school Principal
2. Have your school ABN ready
3. Register or log in on the [Landcare Australia Grant Site](#)
4. Complete your application online.



To submit an application:

1. Follow the [link to the application form](#)
2. You can view and download the application form before you start your application
3. In order to enable you to fill out the form you must first register with SmartyGrants
4. If you wish to leave a partially completed application, press '**Save and close**' and log out. You can log back in and continue to edit your application form until you are ready to submit.
5. To submit your application, click the **Review and Submit** button at the bottom of the Navigation Panel. You need to review your application before you can submit it. Once you have submitted your application, no further editing or uploading of support materials is possible.
6. You will receive a confirmation email when your application has been successfully submitted.



If you need more technical help using the form, download the [Help Guide for Applicants](#) or check out [Applicant Frequently Asked Questions \(FAQs\)](#).

For specific questions about your project that are not answered in the guidelines or the [FAQs](#) email grants@landcareaustralia.com.au

Reporting requirements

As a condition of receiving the grant you will be required to complete a final report.

- The report must include:
 - Information on the project achievements (outcomes and outputs), and any other project highlights, alterations or key learnings; and
 - A project 'after' photo showing the outcomes.
- Reporting is undertaken online. Landcare Australia will send you the link shortly after you have received your grant.



**The deadline for project completion and the final report
to be submitted for the Woolworths Junior Landcare Grant is:**

Thursday 8th November 2023

Promoting your project

All successful recipients will receive a digital grant recipient promotional pack. This will be sent to successful grant recipients via email when they are offered funding. Some of the items included in the pack are a certificate, digital assets, photo release form and tips for taking photos and telling a great story.

Frequently Asked Questions

To see the 2023 Woolworths Junior Landcare Grant's Frequently Asked Questions, click [here](#).





Terms and Conditions

The funding for this grant will be administered by Landcare Australia. Prior to submitting your application you will be required to agree to Landcare Australia's [standard terms and conditions](#).

About Landcare Australia and Junior Landcare

Landcare Australia is the leading national not-for-profit organisation working in partnership with business, government and community to support the Landcare community's natural resource management program, including Junior Landcare.

Junior Landcare is about encouraging young people to play an active role in ensuring the safe future of their environment. Launched in May 1998, Junior Landcare recognises that the contribution of young people is vital if the land they are to inherit is to be in the best possible condition. Junior Landcare also encourages young people to develop a sense of responsibility to the land and other natural resources. It also provides a great framework for learning in outdoor 'living classrooms', and can be successfully integrated into a range of topics within the school curriculum.



Junior
Landcare



Woolworths
The fresh food people