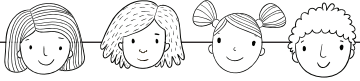
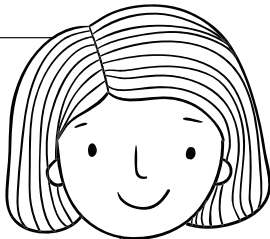




BUZZ YOUR WAY THROUGH THE BEE MAZE



Bees pollinate many fruit and vegetable flowers including tomatoes, watermelon, passion fruits, apples, cherries, strawberries and mangoes. If we take care of the bees, the bees will take care of us.



DID YOU KNOW:

There are over 25,000 species of bees in the world. In Australia we have over 2,000 species of native bees, which are important pollinators of our magnificent wildflowers and native plants. The bee you can see here is a teddy bear bee (*Amegilla (Asaropoda)*) - a solitary native bee found in all states of Australia except Tasmania.

