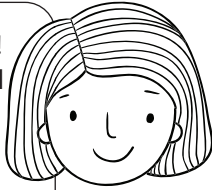




FROG POND COLLAGE

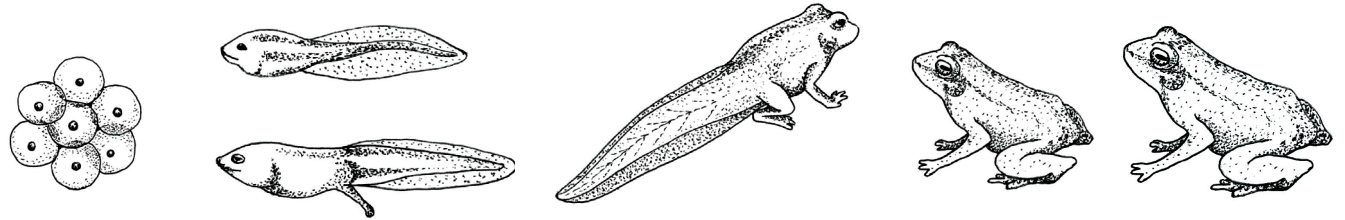
If you build it, they will come! Suyin has carefully designed and built her frog pond. Making the pond as frog-friendly as possible, Suyin has surrounded the pond edges with rocks and logs. Frogs and tadpoles need a variety of plants, both in and out of the water. Suyin has planted grasses and shrubs that are local to her area. The plants will attract insects keeping the frogs well fed.



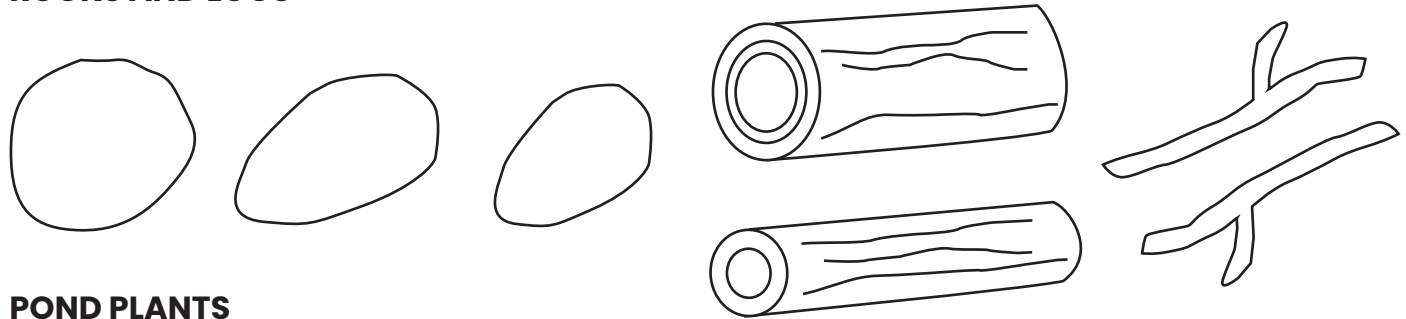
INSTRUCTIONS

1. Print both pages, colour in your pond outline, plants, rocks, logs, sticks, tadpoles and frogs.
2. Cut out the pieces you want to include in your pond.
2. Think about where you want to locate each cut-out piece. Where should the plants and rocks be located? (Tip: Frogs need help climbing in and out of the water, be sure to position sticks and logs on the edge for easy pond access).
3. Glue your cut-out pieces onto the pond outline and admire your beautifully designed pond!

EGGS, TADPOLES AND FROGS



ROCKS AND LOGS



POND PLANTS





FROG POND COLLAGE (POND OUTLINE)

